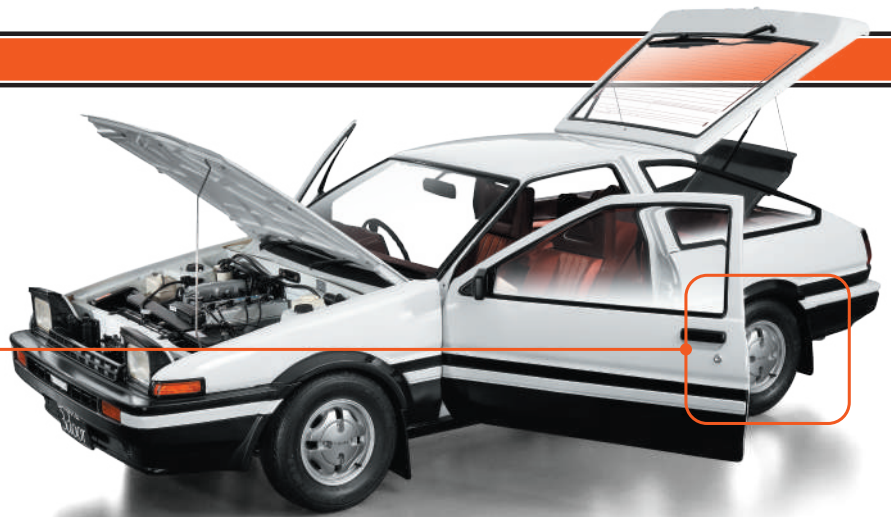


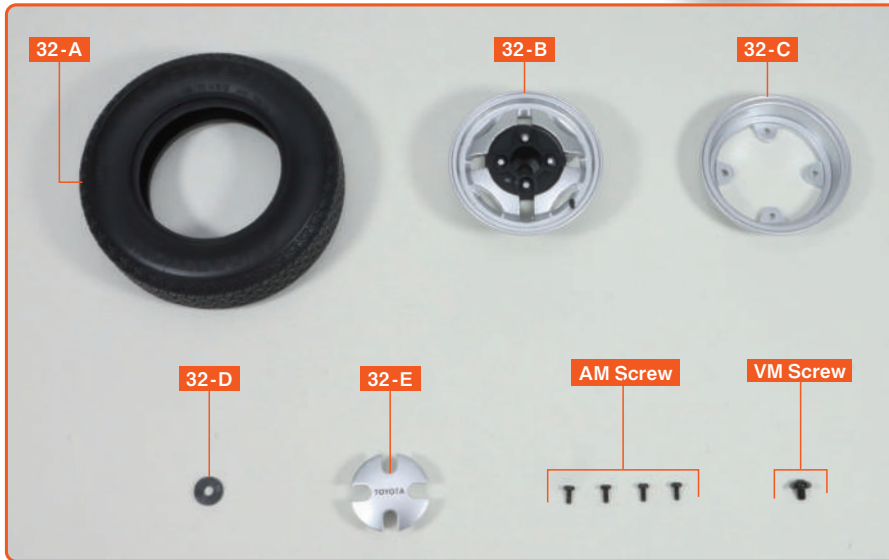
# Issue 32

In this issue, we will assemble the right rear wheel and store the chassis assembled so far.



## Assemble the Right Rear Wheel

※ In this guide "Left" or "(L)", and "Right" or "(R)", refer to the direction as viewed from the driver's seat.



**32-A** Tyre

**32-B** Outer Rim

**32-C** Inner Rim

**32-D** Washer

**32-E** Rim Cap

**AM Screw** (1.7×4 mm) ×4+Spare

**VM Screw** (2.3×4×6 mm) ×1+Spare

View the follow-along video



※ Due to the model's design, the shapes of some parts may differ from those of the real vehicle.

### step 1 Fit the Wheel Rim to the Tyre

You may also refer to Step 1 in Issue 3



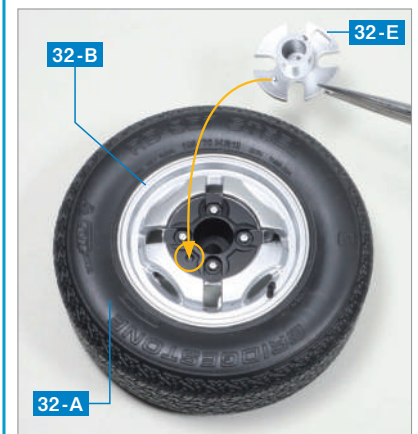
Fit the **32-B Outer Rim** into the **32-A Tyre**.

2



**32-B Outer Rim** fitted into the **32-A Tyre**.

By temporarily fitting the protrusions of the **32-E Rim Cap** into the holes in the **32-B Outer Rim**, you can check the orientation of the "TOYOTA" logo on **32-E**. You may adjust the position of the logo on the **32-A Tyre** to your preference to match this angle. If the temporarily fitted **32-E** is difficult to remove, gently push it from the reverse side using a toothpick or similar tool.



3



While holding the **32-B Outer Rim** in place to prevent it from coming loose, turn it over and fit the recesses on the reverse side of the **32-C Inner Rim** onto the protrusions on the screw holes of **32-B**.

Ensure that the screw holes on **32-C** and **32-B** are aligned accurately.



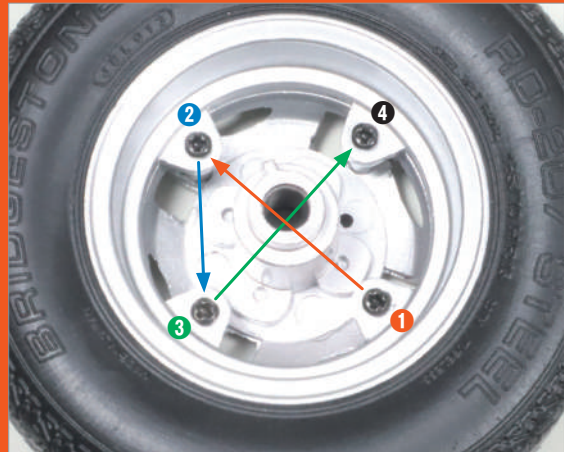
While holding both rims in place to prevent them from shifting, secure the four points with **AM screws**.

**Step complete**



## Tightening Wheel Screws in a Criss-cross Pattern

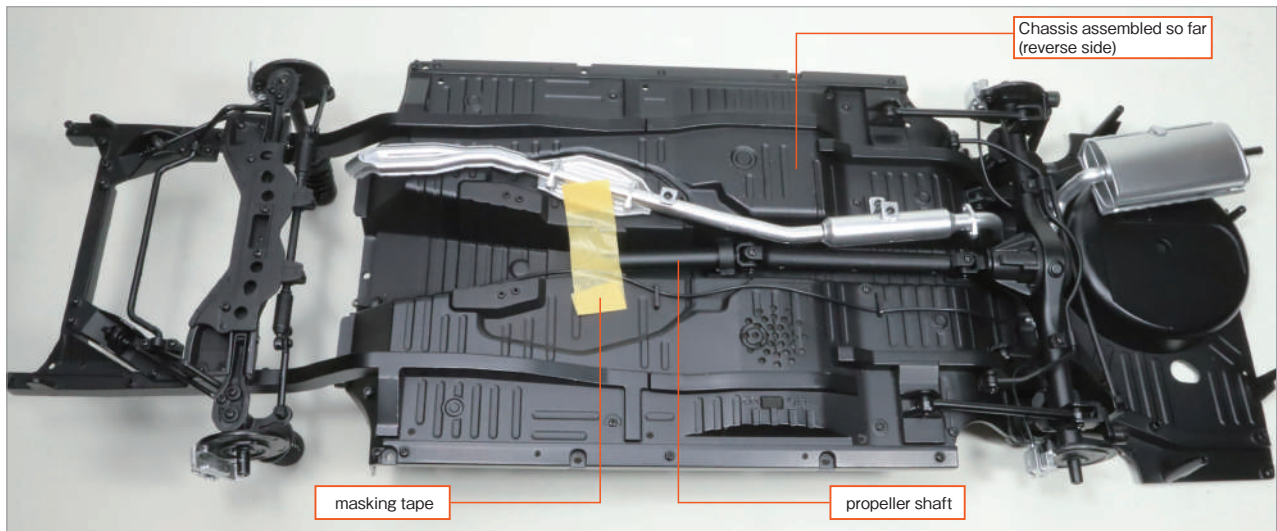
In Step 4, the wheel rim is secured with four screws. Rather than fully tightening each screw one at a time, it is best to first tighten one screw lightly ①, then lightly tighten the screw diagonally opposite ②, followed by the adjacent screw ③, and finally the remaining diagonal screw ④. After checking the overall alignment, fully tighten the screws in the same criss-cross pattern. This is the same method used when changing tyres on a real vehicle.



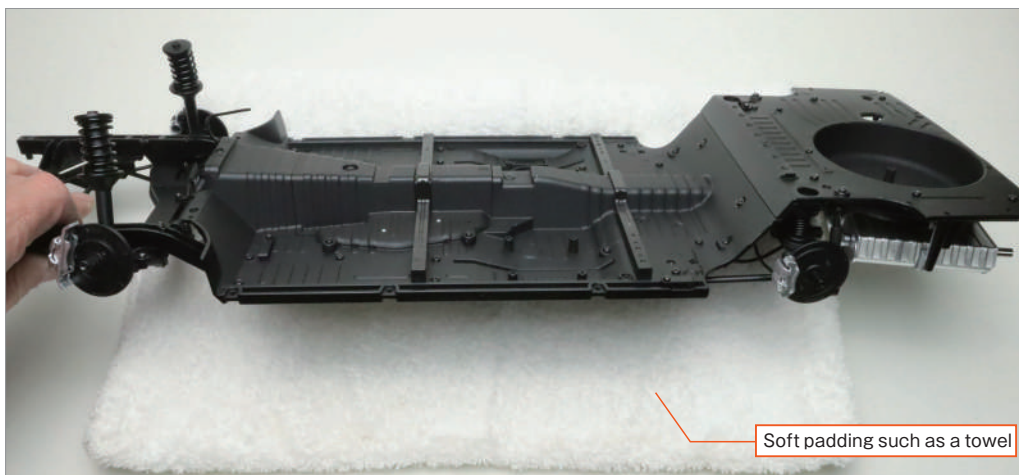
The four tyres assembled so far, along with the **3-D, 17-C, 30-E** and **32-E Rim Caps**, and the **6-L, 17-D, 30-D** and **32-D Washers**, are all identical and interchangeable.

In addition, the two front brake discs and the two rear brake discs assembled so far are also identical for both the left and right sides. Please keep all of these parts in a safe place until they are fitted to the chassis in a later issue.

## Store the chassis assembled so far



Turn over the chassis assembled so far and, to prevent damage to the propeller shaft during future assembly, temporarily secure the propeller shaft using masking tape or similar.



When placing the chassis down, it is recommended to rest it on a towel or similar surface to prevent the parts on the underside from being damaged or scratched by the weight of the chassis.



Store the chassis in a large cardboard box or similar container to protect it from dust and dirt.

## Complete

The assembly for Issue 32 is complete.

The Trueno chassis is now nearing completion.

The 32-D Washer, 32-E Rim Cap, and one VM screw will be used in a later issue, so please keep them in a safe place to avoid losing them.

In Issue 33, you will attach the fuel tank to the chassis assembled so far.

